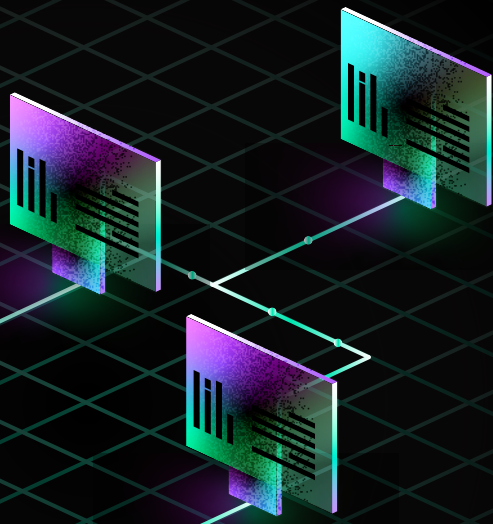


Incredibuild10

BREAK OUT FROM THE LINEAR DEVELOPMENT CYCLE

Incredibuild 10 gives your teams the flexibility to break free from linear development and gives your team the freedom to work smarter. Empower your developers to iterate more frequently, complete builds faster, and create amazing software.

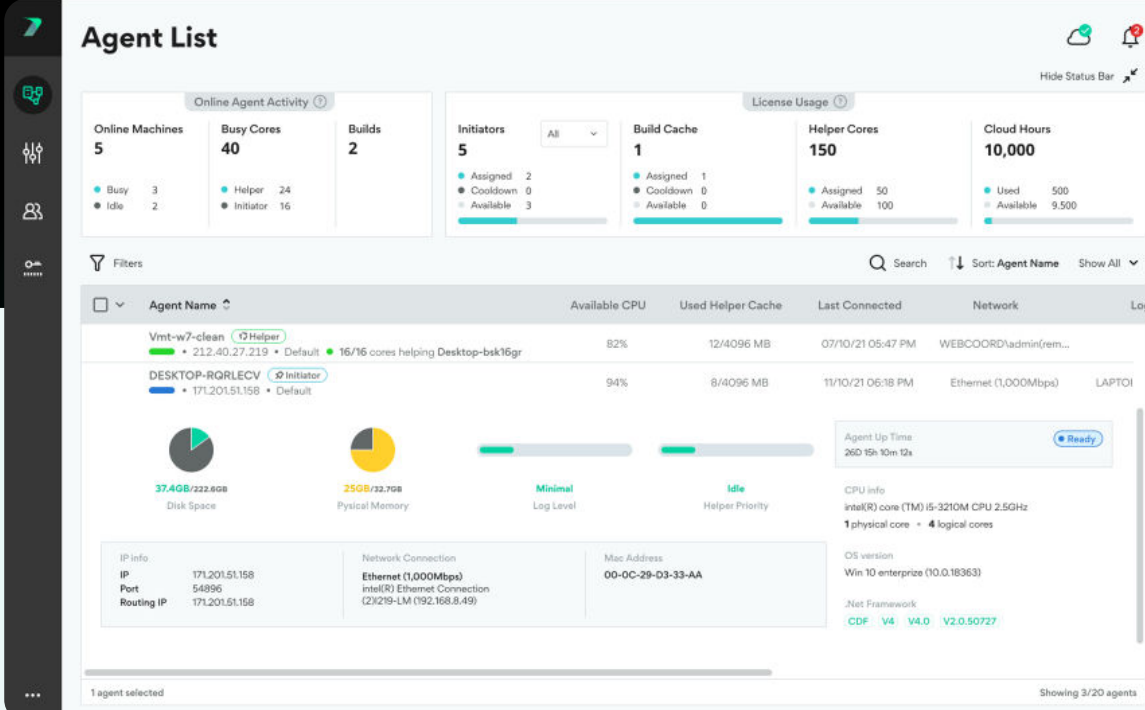


Work smarter with Build Cache

Build Cache accelerates your dev teams' work even more by cutting down the time spent waiting for builds you've already completed before to finish. No more waiting for full rebuilds of incremental changes. Teams can share cached builds across CI workflows, reuse previously generated outputs, and empower true incremental builds with a "build once, reuse" approach.

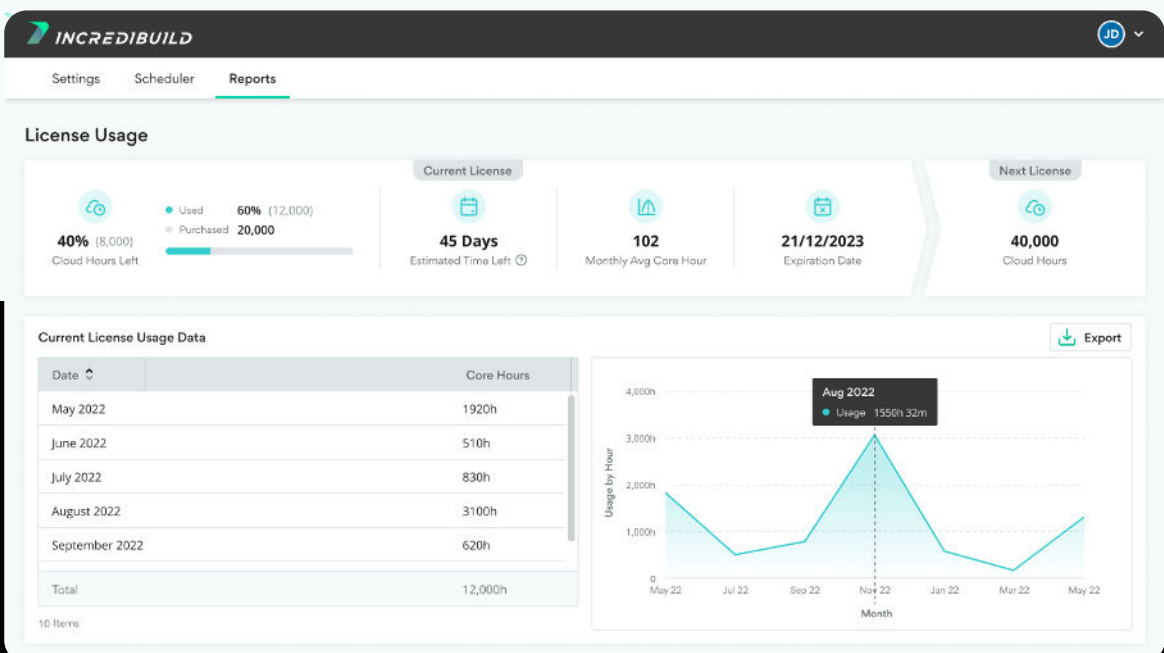
Enable true flexibility and visibility with smart licenses

Incredibuild 10's smart licenses let you be truly efficient with the resources you have. Instead of locking licenses onto devices that don't always need them, you can allocate cores and initiators to the right place, at the right time. More importantly, you can work in any environment – on-prem, cloud, or hybrid. With Incredibuild 10's new UI, you can also gain better visibility into how your licenses are being used, where there are gaps, and how you can better deploy cores to avoid them.



Accelerate cloud builds with greater visibility

Whether you are fully building in the cloud or bursting when needed, Incredibuild for Cloud automatically spins up and down the best mix of on-demand and spot instances from all major cloud providers. With Incredibuild 10 you get more visibility with the Incredibuild Cloud license. Reporting gives you easy access to license consumption, lets you see how many cores are available from your purchase, and get license status updates and predictions all in one place.



Why use Incredibuild dev acceleration?

- Smart**
Share cached build outputs across CI pipelines and empower incremental builds with a "build once, reuse" approach
- Flexible**
Accelerate different types of compute-intensive workloads on the same agents with truly workload-agnostic technology
- Secure**
Run remote processes in a secure sandbox and dynamically emulate everything a process needs to run
- Low maintenance**
No VM image banks, no IDE installs, and no copying files, scripts, and toolchains to start working
- Low footprint**
Nothing gets installed on your machines except a lightweight Incredibuild agent